

1 | 2 | 3 | 4

Z-CLIP/ CLIP INSTALLATION GUIDE

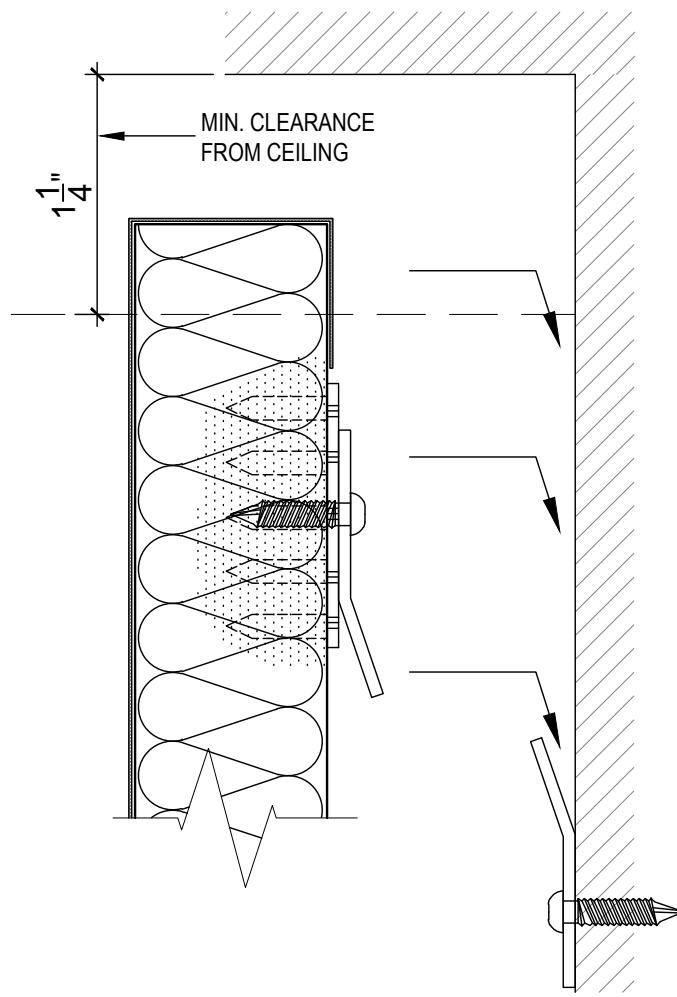
SOUND CONCEPTS 2 PART Z-CLIPS ARE QUICK TO INSTALL BECAUSE WE HAVE SIMPLIFIED THE INSTALLATION METHODS WHEN Z-CLIPS ARE SPECIFIED, SOUND CONCEPTS WILL ATTACH THE PANEL PORTION OF THE CLIP TO OUR IMPALIT CLIPS IN THE FACTORY (WE HARDEN IN OUR IMPALIT CLIPS BECAUSE WE DON'T TRUST THE HOLDING POWER OF SCREWS IN HARD SPOTS)

DETERMINE THE LOCATIONS OF THE PANEL PORTION OF THE Z-CLIP AND TRANSFER THESE LOCATIONS TO THE WALL - REMEMBER TO KEEP A MINIMUM OF 1-1/4" CLEARANCE FROM THE TOP OF THE PANEL TO THE UNDER SIDE OF THE CEILING, TO ALLOW THE PANELS TO BE LIFTED INTO PLACE. AT THE SAME TIME, DETERMINE IF ANY SHIMMING WILL BE REQUIRED

LEVELING BRACKETS ARE AN OPTION AND SUPPLIED ONLY WHEN SPECIFIED. IF LEVELING BRACKETS ARE REQUIRED - 2 PER PANEL (CONTINUOUS LEVELING BRACKETS ALSO AVAILABLE) WILL BE INCLUDED WITH WALL Z-CLIPS LEVELING BRACKETS ARE TO BE INSTALLED FIRST

SCREW THE WALL PORTION OF THE Z-CLIP INTO SOLID GROUNDS ON THE WALL. (MEASURE DOWN FROM TOP OF PANEL TO BOTTOM OF PANEL Z-CLIP, SUBSTRACT 5/8" TO LOCATE TOP OF WALL Z-CLIP) SCREW ALL WALL PORTIONS OF Z-CLIP TO WALL OF ONE PANEL ONLY. HANG FIRST PANEL FOR FIT AND ALIGNMENT, THEN REMOVE

FROM FIRST PANEL WALL CLIP LOCATIONS, SNAP LEVEL CHALK LINES, MARK PANEL JOINTS ON WALL, THUS ALLOWING YOU TO INSTALL REMAINDER OF WALL CLIPS BEFORE HANGING PANELS
ONCE ALL CLIPS ARE IN PLACE, CLEAN HANDS AND HANG PANELS. BECAUSE OF THE SIZE OF WALL CUPS, LATERAL MOVEMENT IS POSSIBLE TO ENSURE A TIGHT JOINT FIT



599 Henry Street
Winnipeg, Manitoba
Canada R3A 0V1
Phone: 204.783.6297
Fax: 204.783.7806

customerservice@soundconceptscan.com

C PRODUCT:

ACOUSTICAL WALL PANELS

DISCLAIMER

THESE DRAWINGS SHOW TYPICAL DETAILS FOR SOUND CONCEPTS PRODUCTS AND THEIR INSTALLATION. THEY ARE SUBJECT TO CHANGE WITHOUT NOTICE. SOUND CONCEPTS DOES NOT WARRANT AND ASSUMES NO LIABILITY FOR THE ACCURACY, COMPLETENESS OR FITNESS FOR A PARTICULAR PURPOSE.

01	NEW DWG/SHEET	MAY16	JLB
NO.	REVISION	DATE	BY

B CAD DWG FILE:
A-501-WALLS-SK10.DWG

SCALE: AS SHOWN

DRAWN BY: JLBRIONES

DATE: 16MAY2014

THIS DRAWING IS THE PROPERTY OF SOUND CONCEPTS WHICH RESERVES ALL COPYRIGHTS. THE SAME MAY NOT BE USED OR REPRODUCED, IN WHOLE OR IN PART WITHOUT THE WRITTEN PERMISSION OF SOUND CONCEPTS.

TITLE:

Z-CLIP/ CLIP INSTALLATION GUIDE

A

1 | 2 | 3 | 4

A-501-WALLS-SK10