

IMPALIT CLIP INSTALLATION GUIDE

SOUND CONCEPTS IMPALIT CLIPS ARE A SIMPLE AND COST EFFECTIVE, FOUR-STEP MOUNTING METHOD FOR INSTALLING ACOUSTICAL WALL PANELS. IMPALIT CLIPS HAVE OVER TIME.

STEP 1

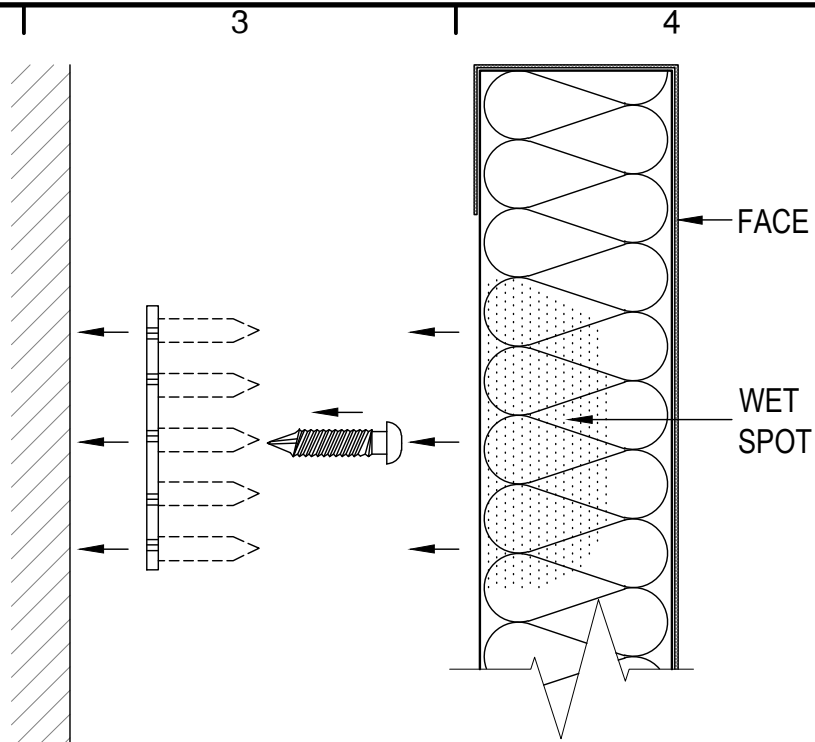
INSPECT THE WALL SURFACE TO DETERMINE IF FLAT AND TRUE OR IF SOME SHIMMING IS REQUIRED. ESTABLISH A STARTING POINT AND SET HORIZONTAL AND VERTICAL PLUMB LINES. MARK OUT PANEL WIDTHS ALONG WALL TO DETERMINE WHERE JOINTS FALL. REFER TO FACTORY INSTALLATION SHEET ATTACHED TO PACKING SLIP IN YOUR SHIPMENT TO DETERMINE THE NUMBER OF IMPALIT CLIPS PER PANEL, EXAMPLE: ON A 48" x 96" PANEL, THE FACTORY RECOMMENDS A ROW OF 3 CLIPS DOWN THE CENTER OF THE PANEL AND 2 ROWS OF 4 ALONG THE OUTSIDE. REMEMBER - SCREW THE IMPALIT CLIP TO THE WALL WITH THE TEETH FACING OUT!

STEP 2

ONCE THE LOCATIONS OF THE IMPALIT CLIPS HAVE BEEN DETERMINED, SCREW THE IMPALIT CLIPS TO THE WALL USE A FLAT HEAD SCREW TO GIVE MAXIMUM CLEARANCE FOR TEETH TO IMPALE INTO PANELS. IMPALIT CLIPS DO NOT HAVE TO BE PLUMB IN LINE WITH EACH OTHER, AS LONG AS THEY ARE CLOSE TO THE OUTER LONG EDGES OF THE PANELS (IMPALIT CLIPS SHOULD ALWAYS BE PLACED VERTICALLY). STAY INSIDE THE PANEL EDGES JUST ENOUGH TO CLEAR THE BACK WRAPPED FABRIC. THE INSTALLER IS RESPONSIBLE TO ENSURE THEY SCREW TO SOLID GROUNDS.

STEP 3

WHILE IMPALIT CLIPS HAVE GOOD HOLDING POWER, OPTIONAL ADHESIVE CAN BE APPLIED FOR ADDITIONAL HOLDING POWER, SUCH AS ELMERS WHITE GLUE. LAY PANEL FACE DOWN, MARK WHERE THE IMPALIT CLIPS WILL ENGAGE PANEL AND POUR 2-3 OZ OF GLUE ON EACH LOCATION. A 3" DIAMETER PUDDLE WILL WICK INTO THE FIBERGLASS IN 2-3 MINUTES, CREATING WET SPOTS. AS SOON AS THE PUDDLES HAVE WICKED INTO THE FIBERGLASS, YOU ARE READY TO INSTALL THE PANEL AN ALTERNATIVE WOULD BE TO USE A PANEL ADHESIVE AND APPLY TO THE TEETH OF THE IMPALIT CLIPS. CAUTION - PANEL ADHESIVE MUST BE A LOW VISCOSITY (EXTREMELY SLOW SETTING AND SKINNING). YOU MUST TEST AN AREA ON THE PANEL BACK - IF THE ADHESIVE DOESN'T WICK INTO THE FIBERGLASS WITHIN 3-5 MINUTES -DON'T USE IT.



STEP 4

ALIGN YOUR PANEL TO ENSURE IT WILL BE SQUARE ON THE WALL AND PRESS THE PANEL ONTO IMPALIT CLIPS FIRMLY. AT EACH IMPALIT CLIP (USE A CLEAN PIECE OF PLYWOOD AS A PUSH BOARD). DO NOT PUSH PANEL INTO PLACE AND THEN PULL BACK. THIS LOOSENS THE HOLES AND REDUCES THE HOLDING POWER. IF YOU NEED TO REMOVE THE PANEL TO RE-ALIGN, TURN THE IMPALIT CLIPS 10 -15 DEGREES, THEREBY ENGAGING AN UN-IMPALED AREA OF FIBERGLASS.



599 Henry Street
Winnipeg, Manitoba
Canada R3A 0V1
Phone: 204.783.6297
Fax: 204.783.7806

customerservice@soundconcepts.com

PRODUCT:

**ACOUSTICAL
WALL PANELS**

DISCLAIMER

THESE DRAWINGS SHOW TYPICAL DETAILS FOR SOUND CONCEPTS PRODUCTS AND THEIR INSTALLATION. THEY ARE SUBJECT TO CHANGE WITHOUT NOTICE. SOUND CONCEPTS DOES NOT WARRANT AND ASSUMES NO LIABILITY FOR THE ACCURACY, COMPLETENESS OR FITNESS FOR A PARTICULAR PURPOSE.

| 01 | NEW DWG/SHEET | MAY16 | JLB |
|-----|---------------|-------|-----|
| NO. | REVISION | DATE | BY |

CAD DWG FILE:

A-501-WALLS-SK9.DWG

SCALE: AS SHOWN

DRAWN BY: JLBRIONES

DATE: 16MAY2014

THIS DRAWING IS THE PROPERTY OF SOUND CONCEPTS WHICH RESERVES ALL COPYRIGHTS. THE SAME MAY NOT BE USED OR REPRODUCED, IN WHOLE OR IN PART WITHOUT THE WRITTEN PERMISSION OF SOUND CONCEPTS.

TITLE:

**IMPALIT CLIP
INSTALLATION
GUIDE**

A-501-WALLS-SK9