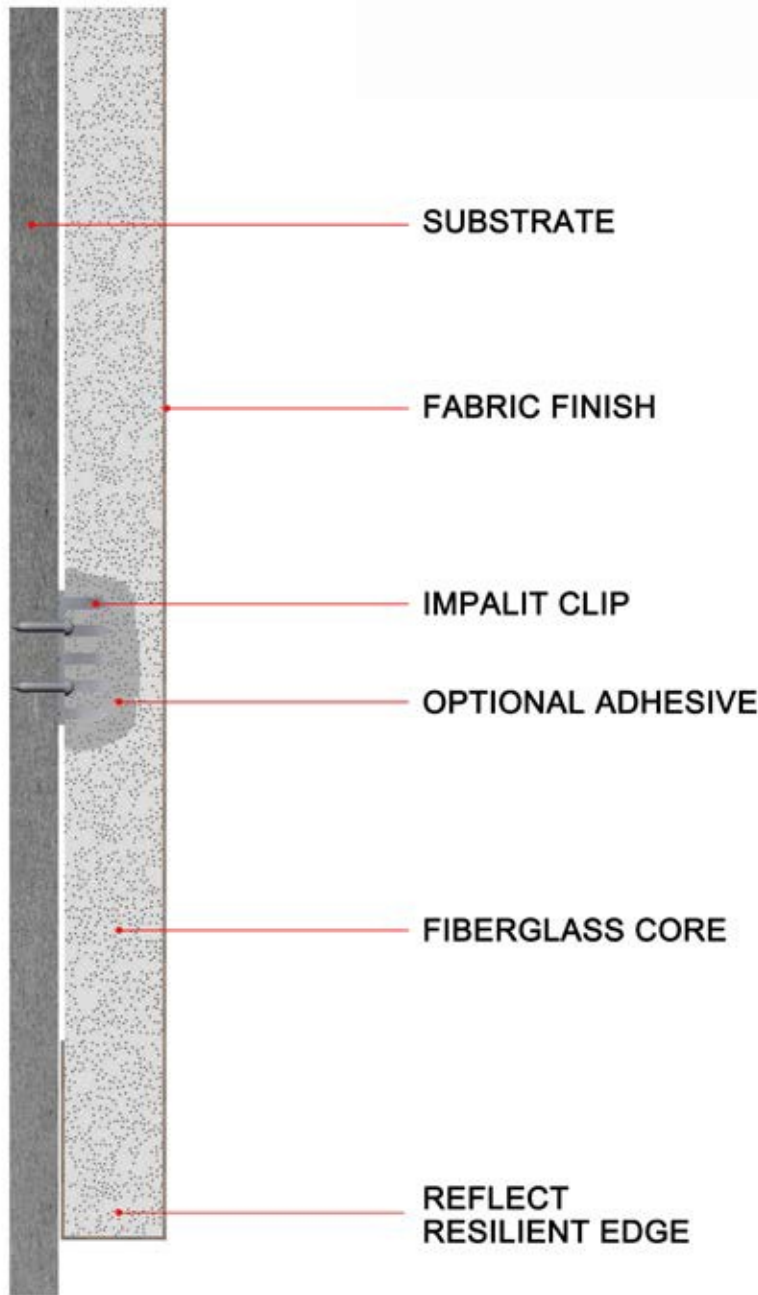




ACOUSTICAL Wall Panel Details



PANEL OPTIONS:

- AP – ACOUSTICAL.....SK1
- LFT – TUNER.....SK1
- RSP REFLECTIVE.....SK1
- HIR 1 – HIGH.....SK2
- HIR 2 – HIGH.....SK2
- HIR 3 – SUPER.....SK2
- HIR 4 – EXTREME.....SK2
- CS 1 - AIRSPACE.....SK3
- CS 2 – MINCORE PLUS..SK3
- CS 3 – SKINS.....SK3

EDGE OPTIONS:

- SQUARE, CHAMFER, PENCIL RADIUS, ¼" BEVEL, ½" BEVEL, BULLNOSE.....SK4

MOUNT OPTIONS:

- ADHESIVE, IMPALIT CLIP, Z-CLIP, Z-BAR/CLIP.....SK5
- HOOK & LOOP, IMPALIT CLIP, MAGNETIC, ROTOFAST.. SK6

CURVED PANELS.....SK7

FLEXIBLE PANELS.....SK8

INSTALLATION GUIDES:

- IMPALIT CLIP.....SK9
- Z-CLIP.....SK10
- Z-BAR/CLIP.....SK11
- FIELD CUTTING.....SK12

C PRODUCT:

ACOUSTICAL WALL PANELS

DISCLAIMER

THESE DRAWINGS SHOW TYPICAL DETAILS FOR SOUND CONCEPTS PRODUCTS AND THEIR INSTALLATION. THEY ARE SUBJECT TO CHANGE WITHOUT NOTICE. SOUND CONCEPTS DOES NOT WARRANT AND ASSUMES NO LIABILITY FOR THE ACCURACY, COMPLETENESS OR FITNESS FOR A PARTICULAR PURPOSE.

01	NEW DWG/SHEET	APR24	JLB
NO.	REVISION	DATE	BY

CAD DWG FILE:
A-501-WALLS-SK1.DWG

SCALE: AS SHOWN

DRAWN BY: JLBRIONES

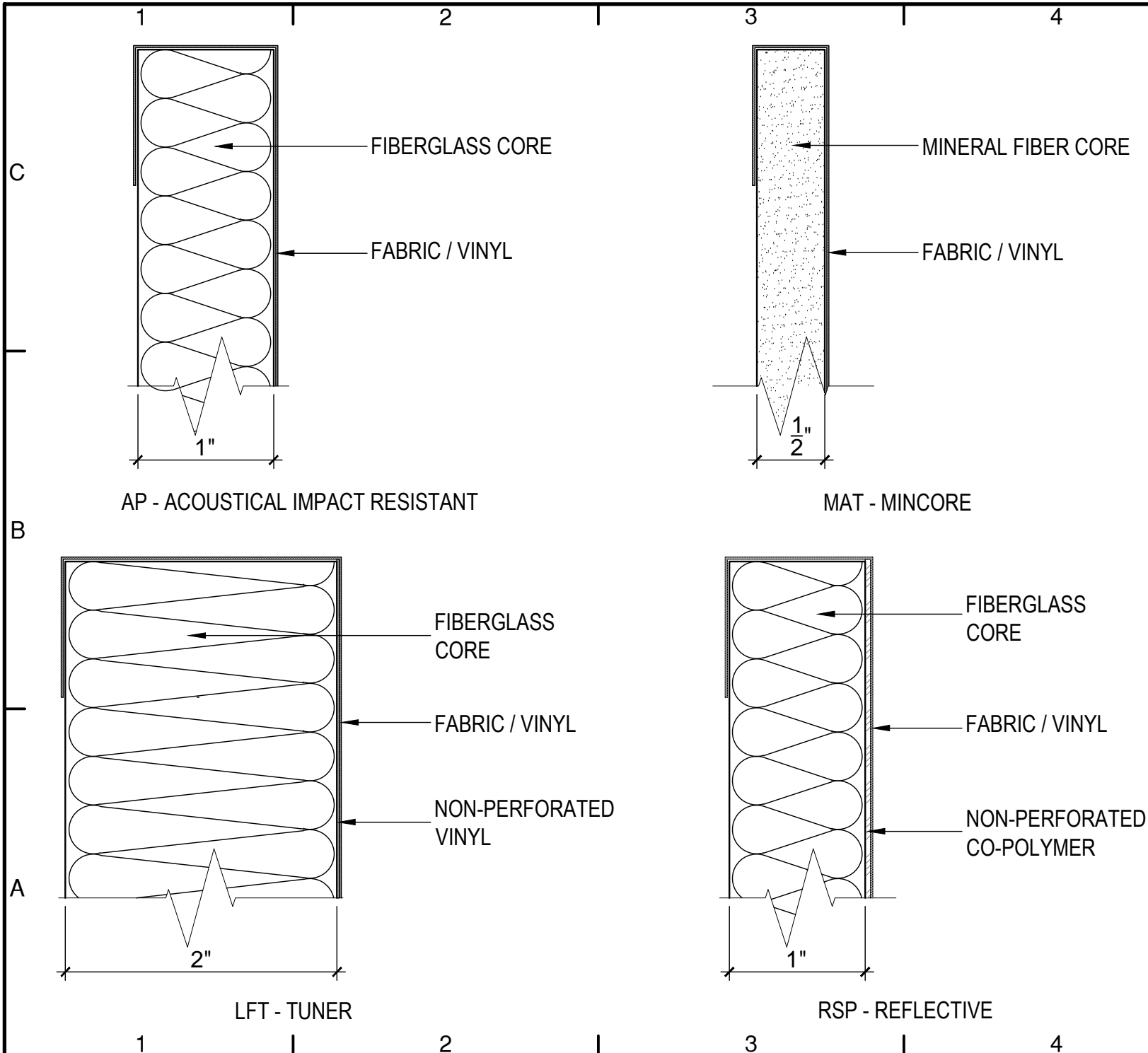
DATE: 24APR2014

THIS DRAWING IS THE PROPERTY OF SOUND CONCEPTS WHICH RESERVES ALL COPYRIGHTS. THE SAME MAY NOT BE USED OR REPRODUCED, IN WHOLE OR IN PART WITHOUT THE WRITTEN PERMISSION OF SOUND CONCEPTS.

TITLE:

PANEL OPTIONS

A-501-WALLS-SK1



C PRODUCT:

ACOUSTICAL WALL PANELS

DISCLAIMER

THESE DRAWINGS SHOW TYPICAL DETAILS FOR SOUND CONCEPTS PRODUCTS AND THEIR INSTALLATION. THEY ARE SUBJECT TO CHANGE WITHOUT NOTICE. SOUND CONCEPTS DOES NOT WARRANT AND ASSUMES NO LIABILITY FOR THE ACCURACY, COMPLETENESS OR FITNESS FOR A PARTICULAR PURPOSE.

01	NEW DWG/SHEET	MAY01	JLB
NO.	REVISION	DATE	BY

CAD DWG FILE:
A-501-WALLS-SK1.DWG

SCALE: AS SHOWN

DRAWN BY: JLBRIONES

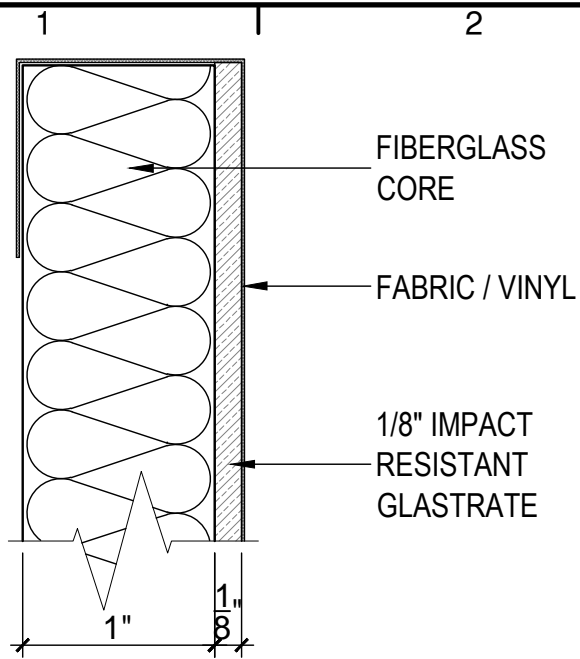
DATE: 01MAY2014

THIS DRAWING IS THE PROPERTY OF SOUND CONCEPTS WHICH RESERVES ALL COPYRIGHTS. THE SAME MAY NOT BE USED OR REPRODUCED, IN WHOLE OR IN PART WITHOUT THE WRITTEN PERMISSION OF SOUND CONCEPTS.

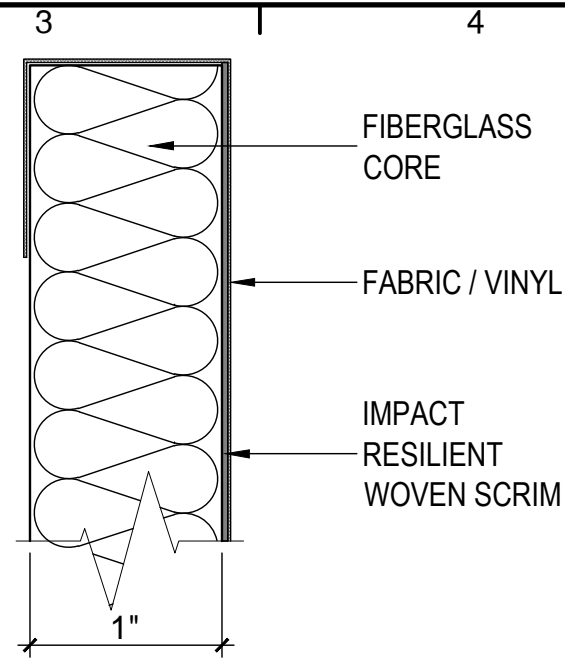
TITLE:

PANEL OPTIONS

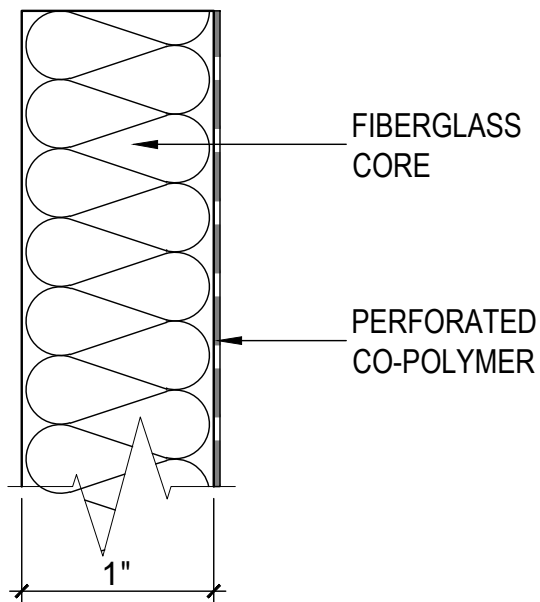
A-501-WALLS-SK2



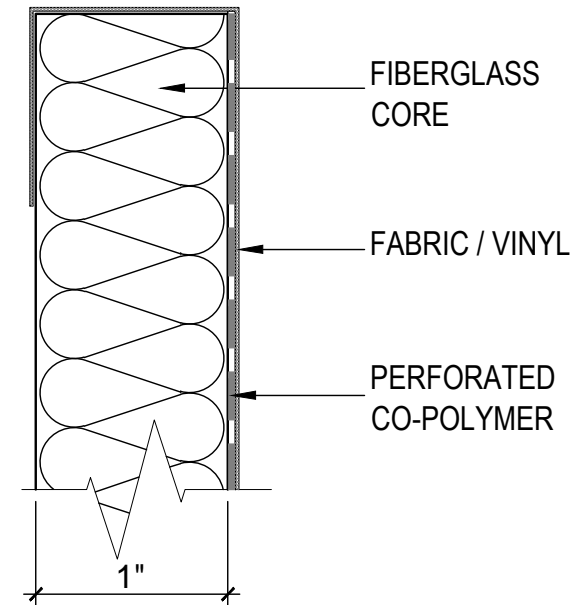
HIR 1 - HIGH IMPACT RESISTANT



HIR 2 - HIGH IMPACT RESILIENT



HIR 3 - SUPER IMPACT RESISTANT



HIR 4 EXTREME IMPACT RESISTANT

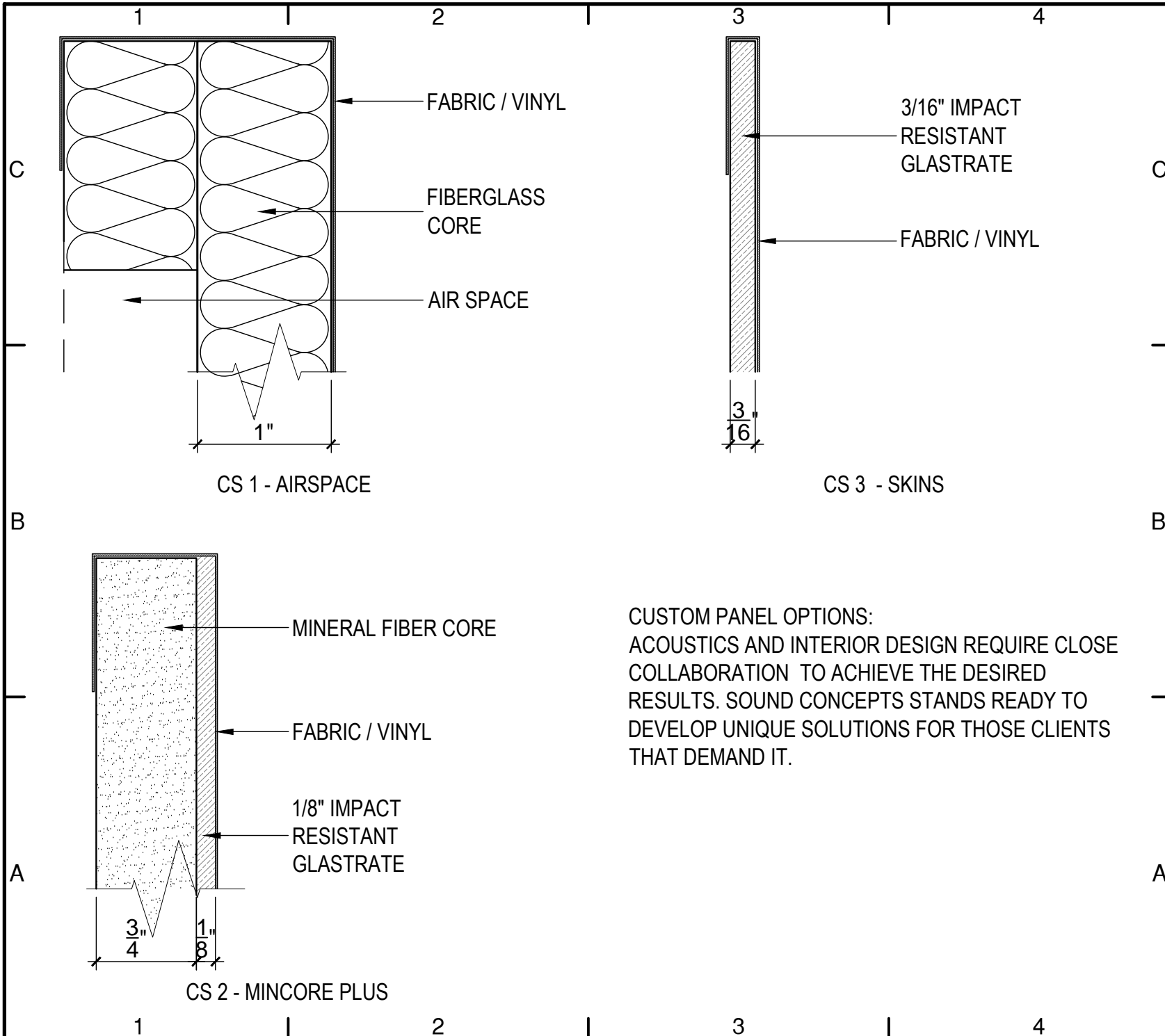
C

B

A

B

A



CUSTOM PANEL OPTIONS:
 ACOUSTICS AND INTERIOR DESIGN REQUIRE CLOSE
 COLLABORATION TO ACHIEVE THE DESIRED
 RESULTS. SOUND CONCEPTS STANDS READY TO
 DEVELOP UNIQUE SOLUTIONS FOR THOSE CLIENTS
 THAT DEMAND IT.

soundconcepts
 Making your ideas resonate

599 Henry Street
 Winnipeg, Manitoba
 Canada R3A 0V1
 Phone: 204.783.6297
 Fax: 204.783.7806
 customerservice@soundconcepts.com

C PRODUCT:

**ACOUSTICAL
 WALL PANELS**

DISCLAIMER

THESE DRAWINGS SHOW TYPICAL
 DETAILS FOR SOUND CONCEPTS
 PRODUCTS AND THEIR INSTALLATION.
 THEY ARE SUBJECT TO CHANGE
 WITHOUT NOTICE. SOUND CONCEPTS
 DOES NOT WARRANT AND ASSUMES NO
 LIABILITY FOR THE ACCURACY,
 COMPLETENESS OR FITNESS FOR A
 PARTICULAR PURPOSE.

01	NEW DWG/SHEET	MAY04	JLB
NO.	REVISION	DATE	BY

CAD DWG FILE:
 A-501-WALLS-SK3.DWG

SCALE: AS SHOWN

DRAWN BY: JLBRIONES

DATE: 04MAY2014

THIS DRAWING IS THE PROPERTY OF
 SOUND CONCEPTS WHICH RESERVES
 ALL COPYRIGHTS. THE SAME MAY NOT
 BE USED OR REPRODUCED, IN WHOLE
 OR IN PART WITHOUT THE WRITTEN
 PERMISSION OF SOUND CONCEPTS.

TITLE:

**CUSTOM
 PANEL OPTIONS**

A-501-WALLS-SK3

C PRODUCT:

**ACOUSTICAL
WALL PANELS**

DISCLAIMER

THESE DRAWINGS SHOW TYPICAL DETAILS FOR SOUND CONCEPTS PRODUCTS AND THEIR INSTALLATION. THEY ARE SUBJECT TO CHANGE WITHOUT NOTICE. SOUND CONCEPTS DOES NOT WARRANT AND ASSUMES NO LIABILITY FOR THE ACCURACY, COMPLETENESS OR FITNESS FOR A PARTICULAR PURPOSE.

01	NEW DWG/SHEET	MAY04	JLB
NO.	REVISION	DATE	BY

CAD DWG FILE:
A-501-WALLS-SK4.DWG

SCALE: AS SHOWN

DRAWN BY: JLBRIONES

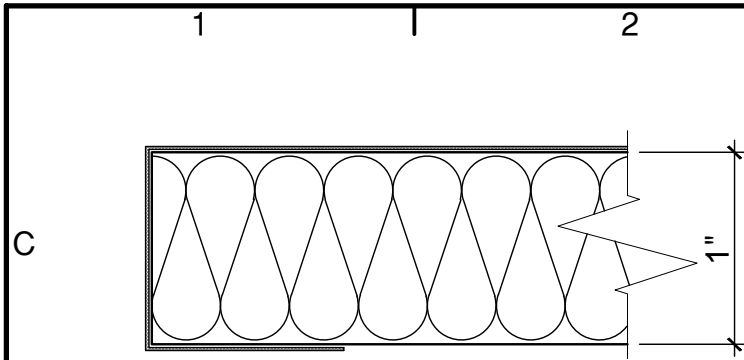
DATE: 04MAY2014

THIS DRAWING IS THE PROPERTY OF SOUND CONCEPTS WHICH RESERVES ALL COPYRIGHTS. THE SAME MAY NOT BE USED OR REPRODUCED, IN WHOLE OR IN PART WITHOUT THE WRITTEN PERMISSION OF SOUND CONCEPTS.

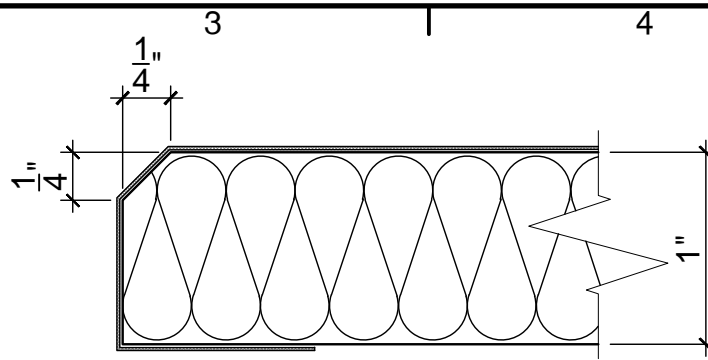
TITLE:

EDGE DETAILS

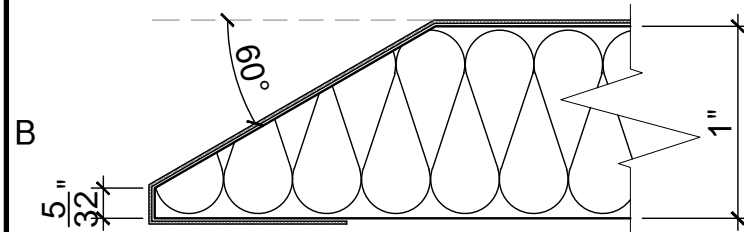
A-501-WALLS-SK4



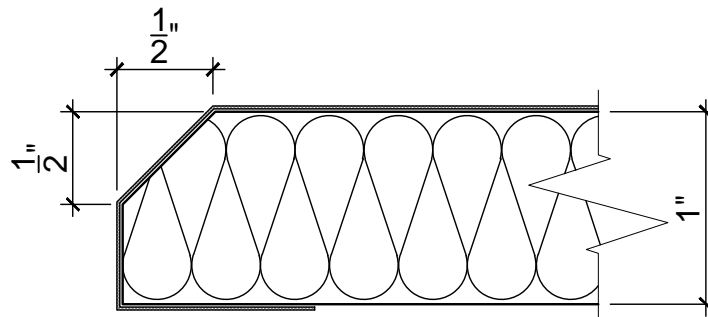
SQUARE



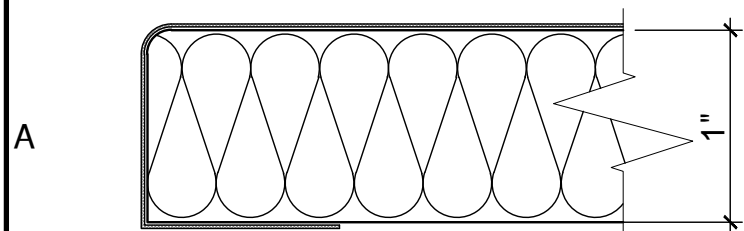
1/4" BEVEL



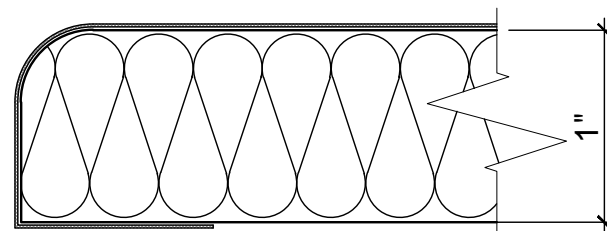
CHAMFER



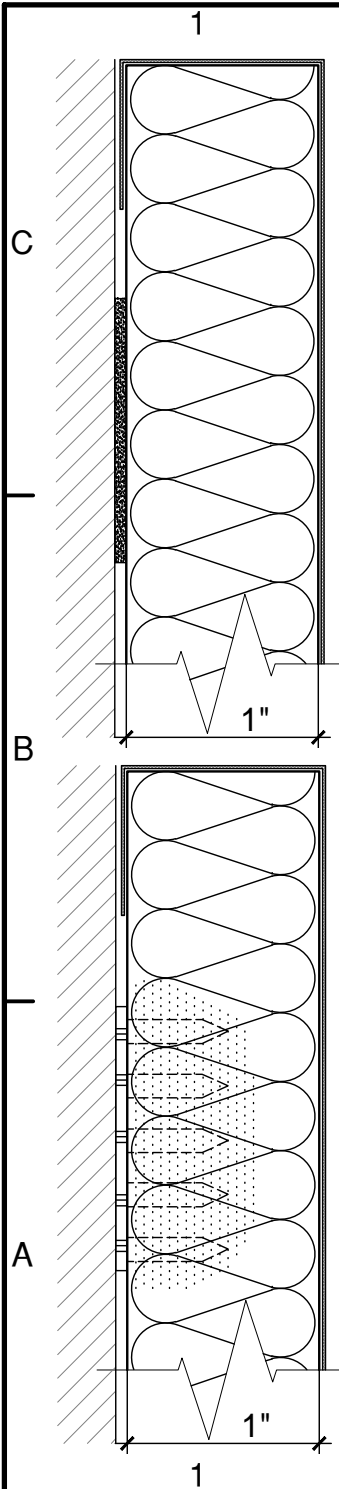
1/2" BEVEL



PENCIL RADIUS



BULLNOSE

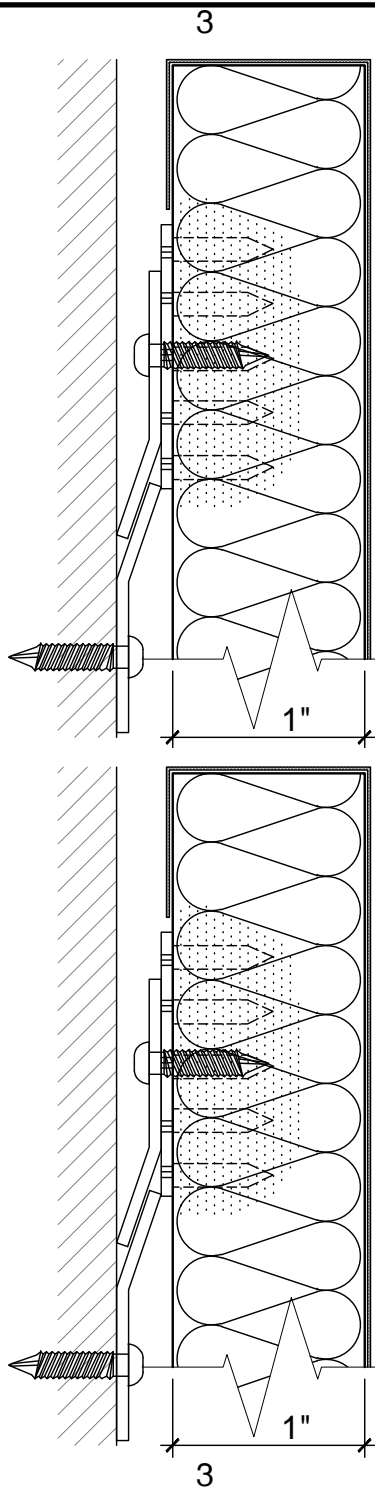


ADHESIVE

INSTALL BOTTOM LEVELING BRACKETS.
 APPLY CONSTRUCTION ADHESIVE TO HARD SPOTS ON PANEL BACK. RIBBONS OF ADHESIVE SHOULD ALSO BE ADDED.
 PRESS FIRMLY TO SPREAD ADHESIVE

IMPALIT CLIP

POSITION AND SCREW IMPALIT CLIPS TO WALL (TEETH OUT).
 LINE UP PANELS TO HORIZONTAL AND VERTICAL PLUMB LINE AND IMPALE PANEL FIRMLY INTO CLIPS.
 IF ADHESIVE OPTION REQUIRED, BUTTER TEETH WITH EXTREMELY SLOW SETTING PANEL ADHESIVE IMMEDIATELY PRIOR TO IMPALING EACH PANEL



Z - CLIP

PANEL PORTION OF Z-CLIPS ARE FACTORY INSTALLED TRANSFER THESE LOCATIONS TO WALL AND FASTEN WALL PORTION.
 ENGAGE PANEL CLIP

Z - BAR / CLIP

PANEL PORTION OF Z-CLIPS ARE FACTORY INSTALLED TRANSFER THESE LOCATIONS TO WALL AND FASTEN WALL PORTION.
 ENGAGE PANEL CLIP



599 Henry Street
 Winnipeg, Manitoba
 Canada R3A 0V1
 Phone: 204.783.6297
 Fax: 204.783.7806

customerservice@soundconcepts.ca

C PRODUCT:

ACOUSTICAL WALL PANELS

DISCLAIMER

THESE DRAWINGS SHOW TYPICAL DETAILS FOR SOUND CONCEPTS PRODUCTS AND THEIR INSTALLATION. THEY ARE SUBJECT TO CHANGE WITHOUT NOTICE. SOUND CONCEPTS DOES NOT WARRANT AND ASSUMES NO LIABILITY FOR THE ACCURACY, COMPLETENESS OR FITNESS FOR A PARTICULAR PURPOSE.

01	NEW DWG/SHEET	MAY08	JLB
----	---------------	-------	-----

B NO. REVISION DATE BY

CAD DWG FILE:
 A-501-WALLS-SK5.DWG

SCALE: AS SHOWN

DRAWN BY: JLBRIONES

DATE: 08MAY2014

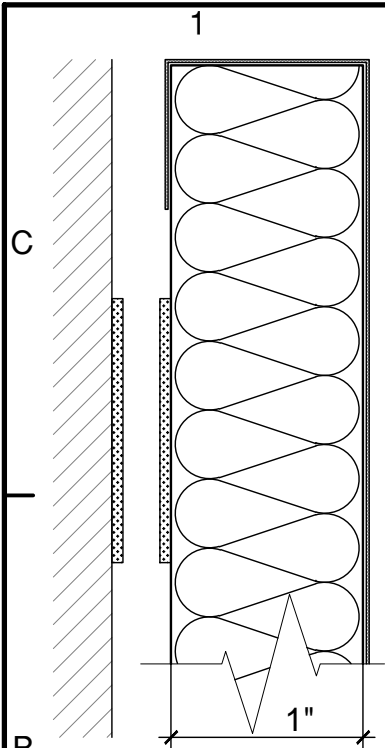
THIS DRAWING IS THE PROPERTY OF SOUND CONCEPTS WHICH RESERVES ALL COPYRIGHTS. THE SAME MAY NOT BE USED OR REPRODUCED, IN WHOLE OR IN PART WITHOUT THE WRITTEN PERMISSION OF SOUND CONCEPTS.

TITLE:

PANEL MOUNTS

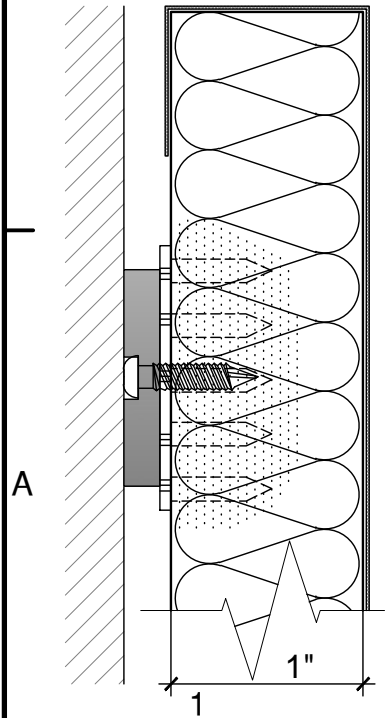
A

A-501-WALLS-SK5



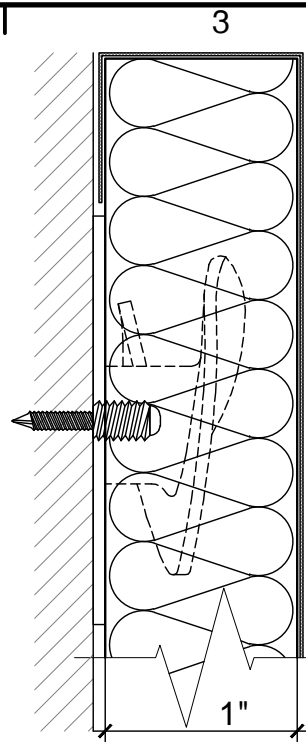
HOOK & LOOP

INSTALL BOTTOM LEVELING BRACKETS. THE HOOK SIDE IS FACTORY INSTALLED ON BACK OF PANEL. TRANSFER THESE LOCATIONS TO WALL AND SECURELY FASTEN (STAPLE OR SCREW) THE LOOP SIDE. PRESS FIRMLY ON PANEL AT HOOK AND LOOP LOCATION



MAGNETIC

INSTALL BOTTOM LEVELING BRACKET IF REQUIRED. THE MAGNETS ARE FACTORY INSTALLED. PRESS PANEL IN PLACE AGAINST METAL SURFACE



ROTOFAST

SCREW ROTOFAST SNAP-ON ANCHORS INTO THE BACK OF THE PANEL USING THE ROTOFAST DRIVER TOOL. INSERT MARKING PLUGS INTO THE SNAP-ON ANCHORS. PUSH PANEL AGAINST WALL TO MARK ANCHOR LOCATIONS. SCREW RATCHETS TO WALL AT MARKED LOCATIONS. (#8 SCREWS RECOMMENDED) FIRMLY PUSH PANEL ONTO RATCHETS TO COMPLETE INSTALLATION.



599 Henry Street
Winnipeg, Manitoba
Canada R3A 0V1
Phone: 204.783.6297
Fax: 204.783.7806
customerservice@soundconcepts.ca

C PRODUCT:

ACOUSTICAL WALL PANELS

DISCLAIMER

THESE DRAWINGS SHOW TYPICAL DETAILS FOR SOUND CONCEPTS PRODUCTS AND THEIR INSTALLATION. THEY ARE SUBJECT TO CHANGE WITHOUT NOTICE. SOUND CONCEPTS DOES NOT WARRANT AND ASSUMES NO LIABILITY FOR THE ACCURACY, COMPLETENESS OR FITNESS FOR A PARTICULAR PURPOSE.

01	NEW DWG/SHEET	MAY08	JLB
NO.	REVISION	DATE	BY

CAD DWG FILE:
A-501-WALLS-SK6.DWG

SCALE: AS SHOWN

DRAWN BY: JLBRIONES

DATE: 08MAY2014

THIS DRAWING IS THE PROPERTY OF SOUND CONCEPTS WHICH RESERVES ALL COPYRIGHTS. THE SAME MAY NOT BE USED OR REPRODUCED, IN WHOLE OR IN PART WITHOUT THE WRITTEN PERMISSION OF SOUND CONCEPTS.

TITLE:

PANEL MOUNTS

A-501-WALLS-SK6

C PRODUCT:

**ACOUSTICAL
WALL PANELS**

DISCLAIMER

THESE DRAWINGS SHOW TYPICAL DETAILS FOR SOUND CONCEPTS PRODUCTS AND THEIR INSTALLATION. THEY ARE SUBJECT TO CHANGE WITHOUT NOTICE. SOUND CONCEPTS DOES NOT WARRANT AND ASSUMES NO LIABILITY FOR THE ACCURACY, COMPLETENESS OR FITNESS FOR A PARTICULAR PURPOSE.

01	NEW DWG/SHEET	MAY16	JLB
NO.	REVISION	DATE	BY

CAD DWG FILE:
A-501-WALLS-SK7.DWG

SCALE: AS SHOWN

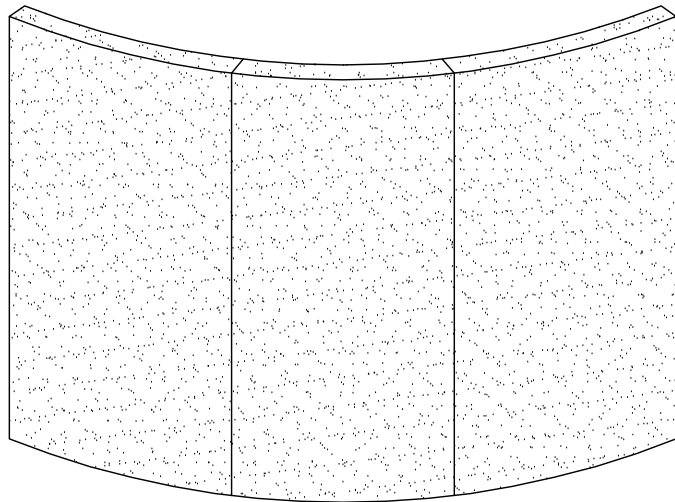
DRAWN BY: JLBRIONES

DATE: 16MAY2014

THIS DRAWING IS THE PROPERTY OF SOUND CONCEPTS WHICH RESERVES ALL COPYRIGHTS. THE SAME MAY NOT BE USED OR REPRODUCED, IN WHOLE OR IN PART WITHOUT THE WRITTEN PERMISSION OF SOUND CONCEPTS.

TITLE:
**CURVED
ACOUSTICAL
WALL PANELS**

A-501-WALLS-SK7

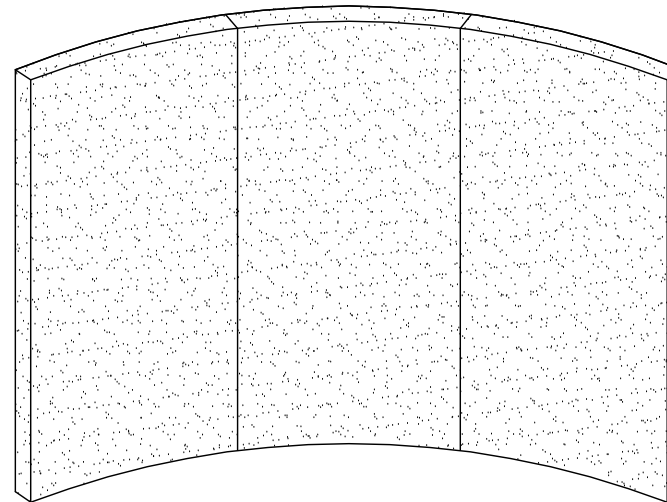


CONVEX WALL PANELS

CURVED PANELS ARE

1. AVAILABLE FOR PANEL TYPES: AP AND HIR-1
2. FACTORY MOLDED TO THE SPECIFIED RADIUS DOWN TO 48"
3. AVAILABLE IN 1-1/8" OR 2-1/8" THICKNESSES
4. CONSTRUCTED WITH A 1/8" HIGH DENSITY GLASTRATE UNDERLAYMENT BETWEEN THE CORE AND THE FABRIC
5. CONSTRUCTED WITH SQUARE CORNERS AND EDGES
6. CONSTRUCTED WITH REFLECT RESILIENT OR HARDENED EDGES
7. MOUNTING GUIDELINES FOR RADII DOWN TO 10' Z-CURVED BAR/Z-CLIP AND Z-CLIP/Z-CLIP WITH LEVELING BRACKETS. IMPALIT CLIP W/ ADHESIVE AND ROTOFAST WOULD ALSO WORK WITH TWICE THE NORMAL OF MOUNTING POINTS

FOR RADII BETWEEN 10' AND 4' IMPALIT CLIP W/ ADHESIVE AND ROTOFAST WOULD ALSO WORK WITH TWICE THE NORMAL OF MOUNTING POINTS AND LEVELING BRACKETS



CONCAVE WALL PANELS

B

A

A

1

2

3

4

1

2

3

4

C PRODUCT:

**ACOUSTICAL
WALL PANELS**

DISCLAIMER

THESE DRAWINGS SHOW TYPICAL DETAILS FOR SOUND CONCEPTS PRODUCTS AND THEIR INSTALLATION. THEY ARE SUBJECT TO CHANGE WITHOUT NOTICE. SOUND CONCEPTS DOES NOT WARRANT AND ASSUMES NO LIABILITY FOR THE ACCURACY, COMPLETENESS OR FITNESS FOR A PARTICULAR PURPOSE.

01	NEW DWG/SHEET	MAY16	JLB
NO.	REVISION	DATE	BY

CAD DWG FILE:
A-501-WALLS-SK8.DWG

SCALE: AS SHOWN

DRAWN BY: JLBRIONES

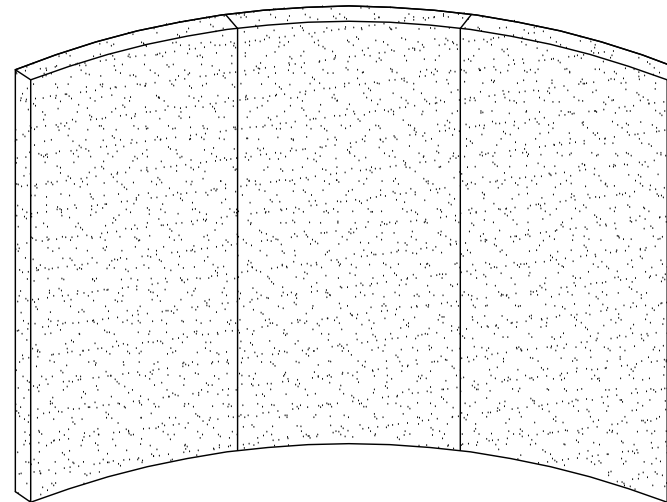
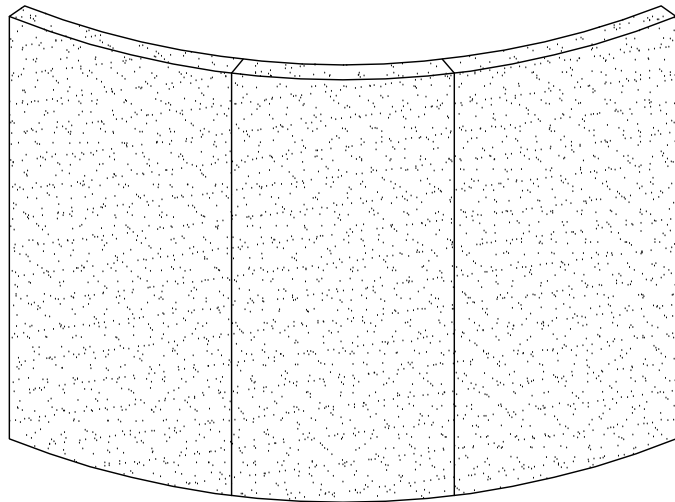
DATE: 16MAY2014

THIS DRAWING IS THE PROPERTY OF SOUND CONCEPTS WHICH RESERVES ALL COPYRIGHTS. THE SAME MAY NOT BE USED OR REPRODUCED, IN WHOLE OR IN PART WITHOUT THE WRITTEN PERMISSION OF SOUND CONCEPTS.

TITLE:

**FLEXIBLE
ACOUSTICAL
WALL PANELS**

A-501-WALLS-SK8



FLEXIBLE WALL PANELS

FLEXIBLE WALL PANELS

1. AVAILABLE FOR PANEL TYPES: AP AND HIR-1
2. FACTORY BACK CUT FOR FIELD FORMING TO THE SPECIFIED RADIUS DOWN TO 48"
3. AVAILABLE IN 1-1/8" OR 2-1/8" THICKNESSES
4. CONSTRUCTED WITH A 1/8" HIGH DENSITY GLASTRATE UNDERLAYMENT BETWEEN THE CORE AND THE FABRIC
5. CONSTRUCTED WITH SQUARE CORNERS AND EDGES
6. CONSTRUCTED WITH REFLECT RESILIENT EDGES
7. MOUNTED WITH IMPALIT CLIPS WITH THE ADHESIVE OPTION

C

B

A

B

A

IMPALIT CLIP INSTALLATION GUIDE

SOUND CONCEPTS IMPALIT CLIPS ARE A SIMPLE AND COST EFFECTIVE, FOUR-STEP MOUNTING METHOD FOR INSTALLING ACOUSTICAL WALL PANELS. IMPALIT CLIPS HAVE OVER TIME.

STEP 1

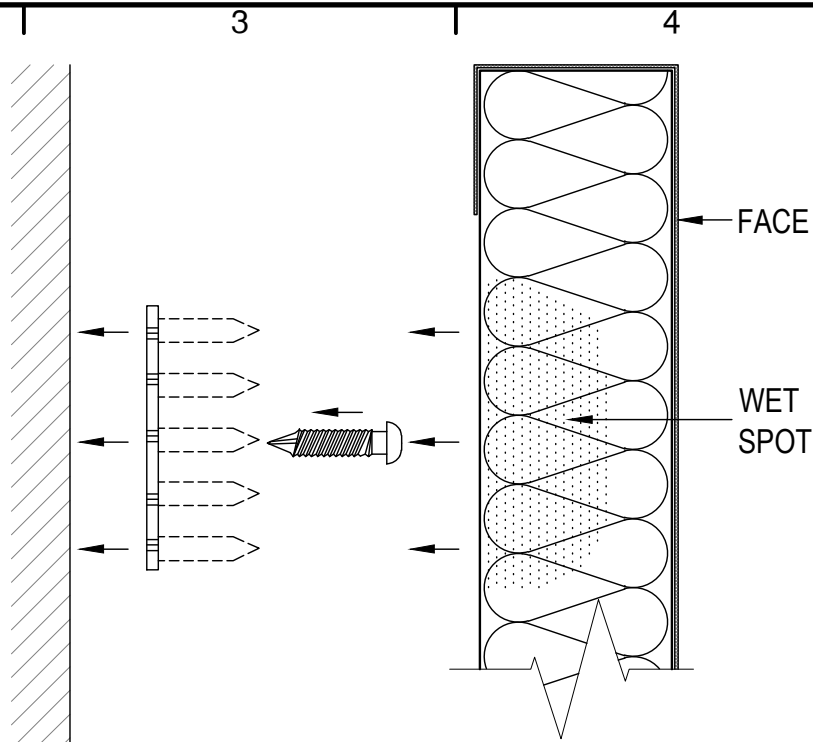
INSPECT THE WALL SURFACE TO DETERMINE IF FLAT AND TRUE OR IF SOME SHIMMING IS REQUIRED. ESTABLISH A STARTING POINT AND SET HORIZONTAL AND VERTICAL PLUMB LINES. MARK OUT PANEL WIDTHS ALONG WALL TO DETERMINE WHERE JOINTS FALL. REFER TO FACTORY INSTALLATION SHEET ATTACHED TO PACKING SLIP IN YOUR SHIPMENT TO DETERMINE THE NUMBER OF IMPALIT CLIPS PER PANEL, EXAMPLE: ON A 48" x 96" PANEL, THE FACTORY RECOMMENDS A ROW OF 3 CLIPS DOWN THE CENTER OF THE PANEL AND 2 ROWS OF 4 ALONG THE OUTSIDE. REMEMBER - SCREW THE IMPALIT CLIP TO THE WALL WITH THE TEETH FACING OUT!

STEP 2

ONCE THE LOCATIONS OF THE IMPALIT CLIPS HAVE BEEN DETERMINED, SCREW THE IMPALIT CLIPS TO THE WALL USE A FLAT HEAD SCREW TO GIVE MAXIMUM CLEARANCE FOR TEETH TO IMPALE INTO PANELS. IMPALIT CLIPS DO NOT HAVE TO BE PLUMB IN LINE WITH EACH OTHER, AS LONG AS THEY ARE CLOSE TO THE OUTER LONG EDGES OF THE PANELS (IMPALIT CLIPS SHOULD ALWAYS BE PLACED VERTICALLY). STAY INSIDE THE PANEL EDGES JUST ENOUGH TO CLEAR THE BACK WRAPPED FABRIC. THE INSTALLER IS RESPONSIBLE TO ENSURE THEY SCREW TO SOLID GROUNDS.

STEP 3

WHILE IMPALIT CLIPS HAVE GOOD HOLDING POWER, OPTIONAL ADHESIVE CAN BE APPLIED FOR ADDITIONAL HOLDING POWER, SUCH AS ELMERS WHITE GLUE. LAY PANEL FACE DOWN, MARK WHERE THE IMPALIT CLIPS WILL ENGAGE PANEL AND POUR 2-3 OZ OF GLUE ON EACH LOCATION. A 3" DIAMETER PUDDLE WILL WICK INTO THE FIBERGLASS IN 2-3 MINUTES, CREATING WET SPOTS. AS SOON AS THE PUDDLES HAVE WICKED INTO THE FIBERGLASS, YOU ARE READY TO INSTALL THE PANEL AN ALTERNATIVE WOULD BE TO USE A PANEL ADHESIVE AND APPLY TO THE TEETH OF THE IMPALIT CLIPS. CAUTION - PANEL ADHESIVE MUST BE A LOW VISCOSITY (EXTREMELY SLOW SETTING AND SKINNING). YOU MUST TEST AN AREA ON THE PANEL BACK - IF THE ADHESIVE DOESN'T WICK INTO THE FIBERGLASS WITHIN 3-5 MINUTES -DON'T USE IT.



STEP 4

ALIGN YOUR PANEL TO ENSURE IT WILL BE SQUARE ON THE WALL AND PRESS THE PANEL ONTO IMPALIT CLIPS FIRMLY. AT EACH IMPALIT CLIP (USE A CLEAN PIECE OF PLYWOOD AS A PUSH BOARD). DO NOT PUSH PANEL INTO PLACE AND THEN PULL BACK. THIS LOOSENS THE HOLES AND REDUCES THE HOLDING POWER. IF YOU NEED TO REMOVE THE PANEL TO RE-ALIGN, TURN THE IMPALIT CLIPS 10 -15 DEGREES, THEREBY ENGAGING AN UN-IMPALED AREA OF FIBERGLASS.



599 Henry Street
Winnipeg, Manitoba
Canada R3A 0V1
Phone: 204.783.6297
Fax: 204.783.7806

customerservice@soundconcepts.com

PRODUCT:

**ACOUSTICAL
WALL PANELS**

DISCLAIMER

THESE DRAWINGS SHOW TYPICAL DETAILS FOR SOUND CONCEPTS PRODUCTS AND THEIR INSTALLATION. THEY ARE SUBJECT TO CHANGE WITHOUT NOTICE. SOUND CONCEPTS DOES NOT WARRANT AND ASSUMES NO LIABILITY FOR THE ACCURACY, COMPLETENESS OR FITNESS FOR A PARTICULAR PURPOSE.

01	NEW DWG/SHEET	MAY16	JLB
NO.	REVISION	DATE	BY

CAD DWG FILE:

A-501-WALLS-SK9.DWG

SCALE: AS SHOWN

DRAWN BY: JLBRIONES

DATE: 16MAY2014

THIS DRAWING IS THE PROPERTY OF SOUND CONCEPTS WHICH RESERVES ALL COPYRIGHTS. THE SAME MAY NOT BE USED OR REPRODUCED, IN WHOLE OR IN PART WITHOUT THE WRITTEN PERMISSION OF SOUND CONCEPTS.

TITLE:

**IMPALIT CLIP
INSTALLATION
GUIDE**

A-501-WALLS-SK9

1 | 2 | 3 | 4

Z-CLIP/ CLIP INSTALLATION GUIDE

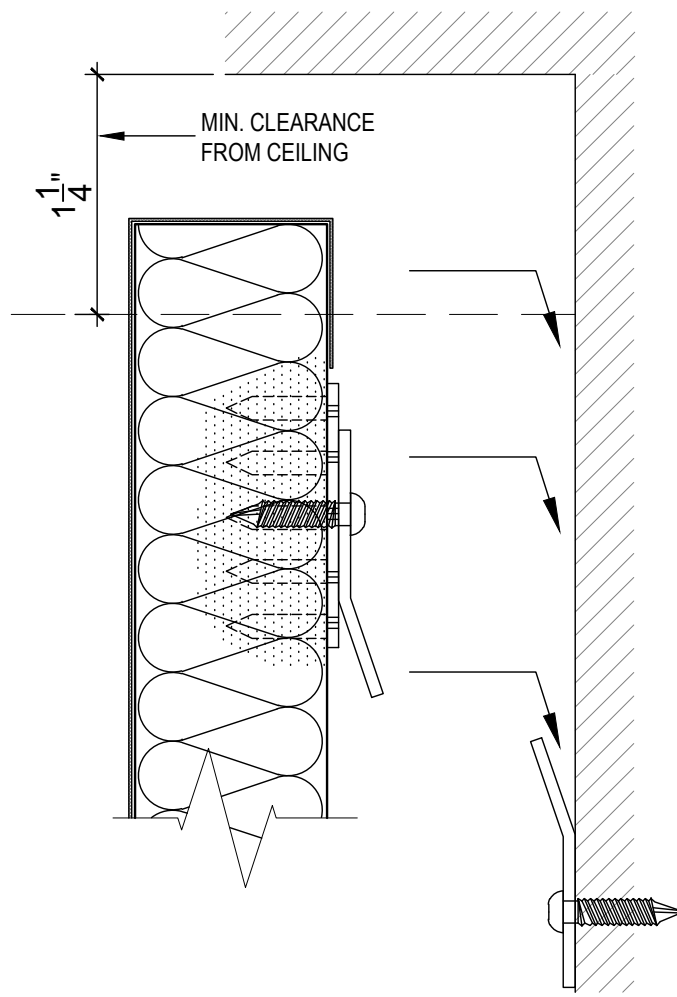
SOUND CONCEPTS 2 PART Z-CLIPS ARE QUICK TO INSTALL BECAUSE WE HAVE SIMPLIFIED THE INSTALLATION METHODS WHEN Z-CLIPS ARE SPECIFIED, SOUND CONCEPTS WILL ATTACH THE PANEL PORTION OF THE CLIP TO OUR IMPALIT CLIPS IN THE FACTORY (WE HARDEN IN OUR IMPALIT CLIPS BECAUSE WE DON'T TRUST THE HOLDING POWER OF SCREWS IN HARD SPOTS)

DETERMINE THE LOCATIONS OF THE PANEL PORTION OF THE Z-CLIP AND TRANSFER THESE LOCATIONS TO THE WALL - REMEMBER TO KEEP A MINIMUM OF 1-1/4" CLEARANCE FROM THE TOP OF THE PANEL TO THE UNDER SIDE OF THE CEILING, TO ALLOW THE PANELS TO BE LIFTED INTO PLACE. AT THE SAME TIME, DETERMINE IF ANY SHIMMING WILL BE REQUIRED

LEVELING BRACKETS ARE AN OPTION AND SUPPLIED ONLY WHEN SPECIFIED. IF LEVELING BRACKETS ARE REQUIRED - 2 PER PANEL (CONTINUOUS LEVELING BRACKETS ALSO AVAILABLE) WILL BE INCLUDED WITH WALL Z-CLIPS LEVELING BRACKETS ARE TO BE INSTALLED FIRST

SCREW THE WALL PORTION OF THE Z-CLIP INTO SOLID GROUNDS ON THE WALL. (MEASURE DOWN FROM TOP OF PANEL TO BOTTOM OF PANEL Z-CLIP, SUBSTRACT 5/8" TO LOCATE TOP OF WALL Z-CLIP) SCREW ALL WALL PORTIONS OF Z-CLIP TO WALL OF ONE PANEL ONLY. HANG FIRST PANEL FOR FIT AND ALIGNMENT, THEN REMOVE

FROM FIRST PANEL WALL CLIP LOCATIONS, SNAP LEVEL CHALK LINES, MARK PANEL JOINTS ON WALL, THUS ALLOWING YOU TO INSTALL REMAINDER OF WALL CLIPS BEFORE HANGING PANELS
ONCE ALL CLIPS ARE IN PLACE, CLEAN HANDS AND HANG PANELS. BECAUSE OF THE SIZE OF WALL CUPS, LATERAL MOVEMENT IS POSSIBLE TO ENSURE A TIGHT JOINT FIT



599 Henry Street
Winnipeg, Manitoba
Canada R3A 0V1
Phone: 204.783.6297
Fax: 204.783.7806

customerservice@soundconceptscan.com

C PRODUCT:

ACOUSTICAL WALL PANELS

DISCLAIMER

THESE DRAWINGS SHOW TYPICAL DETAILS FOR SOUND CONCEPTS PRODUCTS AND THEIR INSTALLATION. THEY ARE SUBJECT TO CHANGE WITHOUT NOTICE. SOUND CONCEPTS DOES NOT WARRANT AND ASSUMES NO LIABILITY FOR THE ACCURACY, COMPLETENESS OR FITNESS FOR A PARTICULAR PURPOSE.

01	NEW DWG/SHEET	MAY16	JLB
NO.	REVISION	DATE	BY

B CAD DWG FILE:
A-501-WALLS-SK10.DWG

SCALE: AS SHOWN

DRAWN BY: JLBRIONES

DATE: 16MAY2014

THIS DRAWING IS THE PROPERTY OF SOUND CONCEPTS WHICH RESERVES ALL COPYRIGHTS. THE SAME MAY NOT BE USED OR REPRODUCED, IN WHOLE OR IN PART WITHOUT THE WRITTEN PERMISSION OF SOUND CONCEPTS.

TITLE:

Z-CLIP/ CLIP INSTALLATION GUIDE

A

1 | 2 | 3 | 4

A-501-WALLS-SK10

C PRODUCT:

ACOUSTICAL WALL PANELS

DISCLAIMER

THESE DRAWINGS SHOW TYPICAL DETAILS FOR SOUND CONCEPTS PRODUCTS AND THEIR INSTALLATION. THEY ARE SUBJECT TO CHANGE WITHOUT NOTICE. SOUND CONCEPTS DOES NOT WARRANT AND ASSUMES NO LIABILITY FOR THE ACCURACY, COMPLETENESS OR FITNESS FOR A PARTICULAR PURPOSE.

01	NEW DWG/SHEET	MAY16	JLB
----	---------------	-------	-----

B

NO.	REVISION	DATE	BY

CAD DWG FILE:

A-501-WALLS-SK12.DWG

SCALE: AS SHOWN

DRAWN BY: JLBRIONES

DATE: 16MAY2014

THIS DRAWING IS THE PROPERTY OF SOUND CONCEPTS WHICH RESERVES ALL COPYRIGHTS. THE SAME MAY NOT BE USED OR REPRODUCED, IN WHOLE OR IN PART WITHOUT THE WRITTEN PERMISSION OF SOUND CONCEPTS.

TITLE:

Z-BAR/ CLIP INSTALLATION GUIDE

A

A-501-WALLS-SK11

Z-BAR/ CLIP INSTALLATION GUIDE

SOUND CONCEPTS Z-BAR/CLIPS ARE QUICK TO INSTALL., BECAUSE WE HAVE SIMPLIFIED THE INSTALLATION METHODS

C

WHEN Z-BAR/CLIPS ARE SPECIFIED, SOUND CONCEPTS WILL ATTACH THE Z-CLIPS TO THE FACTORY INSTALLED IMPALIT CLIPS. (WE HARDEN IN OUR IMPALIT CLIPS BECAUSE WE DON'T TRUST THE HOLDING POWER OF SCREWS IN HARD SPOTS)

DETERMINE THE LOCATIONS OF THE Z-CLIPS AND TRANSFER THESE LOCATIONS TO THE WALL
 - REMEMBER TO KEEP A MINIMUM OF 1-1/4" CLEARANCE FROM THE TOP OF THE PANEL TO THE UNDER SIDE OF THE CEILING, TO ALLOW THE PANELS TO BE LIFTED INTO PLACE. AT THE SAME TIME, DETERMINE IF ANY SHIMMING WILL BE REQUIRED

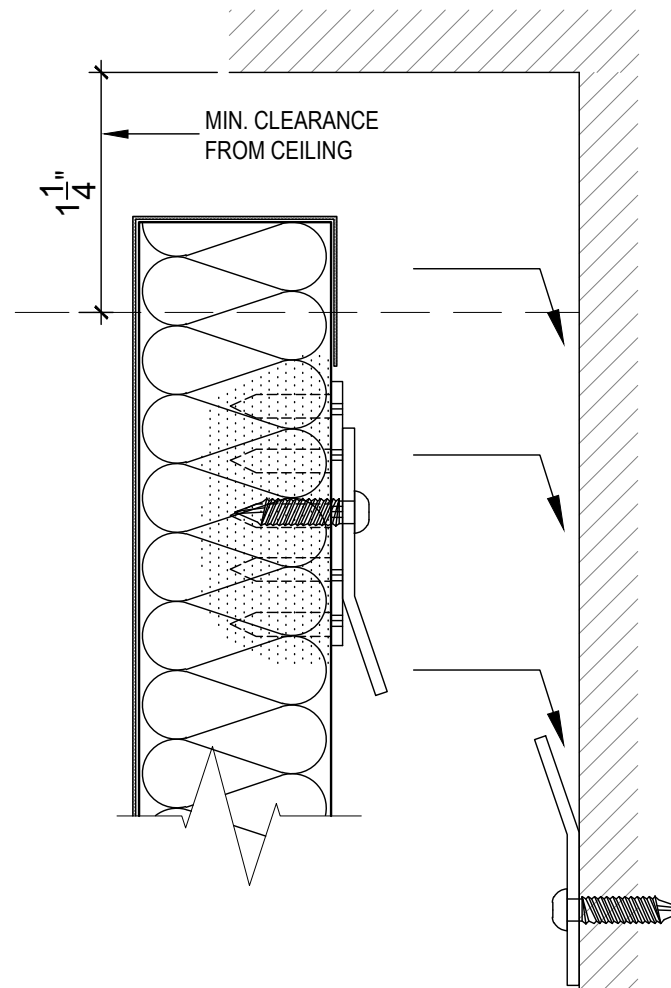
LEVELING BRACKETS ARE AN OPTION AND SUPPLIED ONLY WHEN SPECIFIED. IF LEVELING BRACKETS ARE REQUIRED - 2 PER PANEL (CONTINUOUS LEVELING BRACKETS ALSO AVAILABLE) WILL BE INCLUDED WITH THE Z-BARS
 LEVELING BRACKETS ARE TO BE INSTALLED FIRST

B

SCREW THE Z-BAR (WALL PORTION) INTO SOLID GROUNDS ON THE WALL. (MEASURE DOWN FROM TOP OF PANEL TO BOTTOM OF PANEL Z-CLIP, SUBTRACT 5/8" TO LOCATE TOP OF Z-BAR) SCREW ALL OF THE Z-BARS TO WALL FOR ONE PANEL ONLY. HANG FIRST PANEL FOR FIT AND ALIGNMENT, THEN REMOVE FROM FIRST PANEL Z-BAR LOCATIONS, SNAP LEVEL CHALK LINES, MARK PANEL JOINTS ON WALL, THUS ALLOWING YOU TO INSTALL REMAINDER OF Z-BARS BEFORE HANGING PANELS

A

ONCE ALL BARS ARE IN PLACE, CLEAN HANDS AND HANG PANELS



FIELD CUTTING PANELS AND FIELD CUT OUTS

FIELD CUT OUTS ARE EASILY ACHIEVED WITH SOUND CONCEPTS PANELS ESPECIALLY IF YOU FOLLOW THE OLD ADAGE "MEASURE TWICE, CUT ONCE"

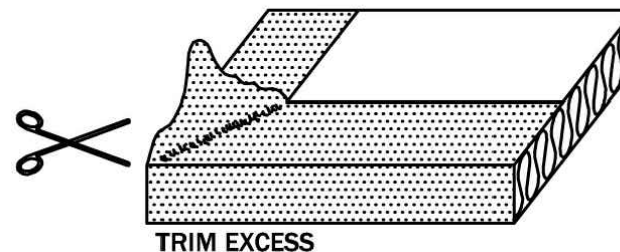
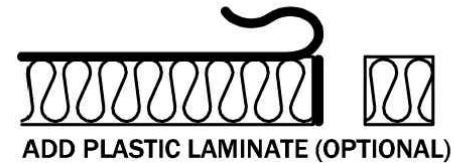
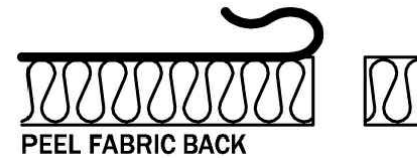
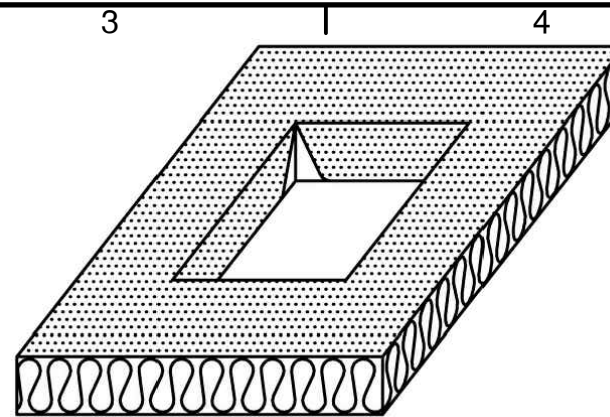
C CUT OUTS

1. LOCATE CUTOUT ON BACK OF PANEL
2. PLACE PANEL FACE DOWN ON CLEAN LEVEL SURFACE
3. CUT FIBERGLASS OUT OF PANEL FROM THE BACK (DO NOT CUT THE FABRIC)
4. PLACE THE CUT PANEL BACK INTO POSITION TO ENSURE THAT THE CUTOUT IS IN THE CURRENT LOCATION
5. LAY THE PANEL FACE UP AND CLEAN, LEVEL SURFACE AND CUT THE FABRIC STARTING FROM THE CENTER TO THE FOUR CORNERS
6. RE-GLUE THE FABRIC USING A SPRAY CONTACT ADHESIVE, TAKING CARE NOT TO OVERSPRAY ONTO THE FACE OF THE FABRIC

B CUT PANELS

1. MEASURE AND MARK ON THE PANEL BACK WHERE THE CUT IS REQUIRED
2. PEEL THE FABRIC OFF THE BACK, EDGES AND ONTO THE FACE, BACK BEYOND THE POINT WHERE THE PANEL NEEDS TO BE CUT
3. CUT THE FIBERGLASS USING A SHARP STAINLESS STEEL KNIFE ALONG THE LINE MARKED PREVIOUSLY
4. RE-GLUE THE FABRIC USING A SPRAY CONTACT ADHESIVE, TAKING CARE NOT TO OVERSPRAY ONTO THE FACE OF THE FABRIC
5. CUT EXCESS FABRIC AT CORNERS IN A SIMILAR FASHION TO THE FACTORY CUT CORNERS

A



599 Henry Street
Winnipeg, Manitoba
Canada R3A 0V1
Phone: 204.783.6297
Fax: 204.783.7806

customerservice@soundconceptscan.com

C PRODUCT:

**ACOUSTICAL
WALL PANELS**

DISCLAIMER

THESE DRAWINGS SHOW TYPICAL DETAILS FOR SOUND CONCEPTS PRODUCTS AND THEIR INSTALLATION. THEY ARE SUBJECT TO CHANGE WITHOUT NOTICE. SOUND CONCEPTS DOES NOT WARRANT AND ASSUMES NO LIABILITY FOR THE ACCURACY, COMPLETENESS OR FITNESS FOR A PARTICULAR PURPOSE.

NO.	REVISION	DATE	BY
01	NEW DWG/SHEET	MAY16	JLB

CAD DWG FILE:

A-501-WALLS-SK12.DWG

SCALE: AS SHOWN

DRAWN BY: JLBRIONES

DATE: 16MAY2014

THIS DRAWING IS THE PROPERTY OF SOUND CONCEPTS WHICH RESERVES ALL COPYRIGHTS. THE SAME MAY NOT BE USED OR REPRODUCED, IN WHOLE OR IN PART WITHOUT THE WRITTEN PERMISSION OF SOUND CONCEPTS.

TITLE:

**FIELD CUTTING
PANELS AND
FIELD CUT OUTS**

A-501-WALLS-SK12