

ACOUSTICAL WALL PANELS

REFLECT IMPACT RESISTANT PANELS

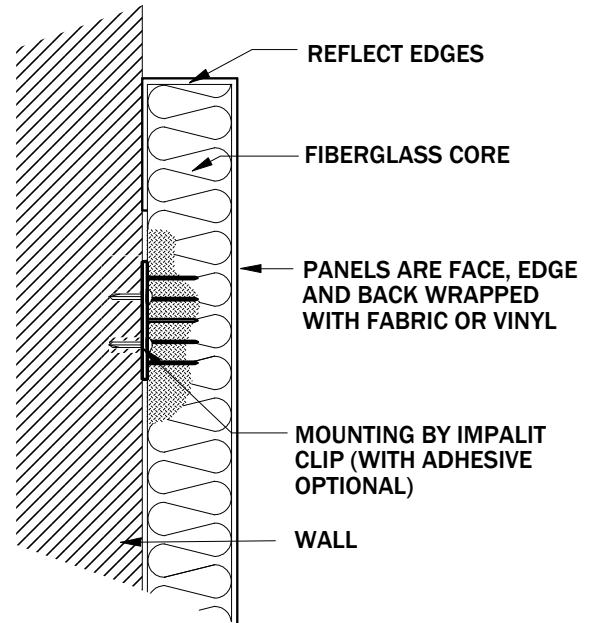
THE STANDARD WHERE ALL PANELS BEGIN. OUR IMPACT RESISTANT PANELS ARE MANUFACTURED FROM OUR STANDARD 6 - 7 PCF FIBERGLASS CORE WHICH IS ACOUSTICALLY ABSORPTIVE. THE ENTIRE CORE IS INERT NON-COMBUSTIBLE AND DIMENSIONALLY STABLE.

THE MOST COMMON APPLICATION OF THESE PANELS ARE WHEN THE PANELS ARE WRAPPED WITH A 100% WOVEN POLYESTER FABRIC. THE FABRIC IS BONDED WITH ACOUSTICALLY TRANSPARENT ADHESIVE TO THE FACE, EDGES AND BACK TO A MINIMUM OF 1-1/2" TO ELIMINATE FABRIC SAG OR PUCKERING. ALL CORNERS ARE TAILORED AND HEAT FUSED.

OTHER FACING MATERIALS RANGING FROM WEBCORE VINYL TO DESIGNTEX FABRICS, MAHARAM FABRICS TO ARC-COM FABRICS ARE ALSO AVAILABLE. CONSULT YOUR LOCAL REP OR FACTORY CONSULTANT FOR AVAILABILITY AND SUITABILITY.

SOUND CONCEPTS REFLECT PANELS PROVIDE A MINIMUM ABUSE RESISTANT SURFACE WITH EXCELLENT NOISE ABSORPTIVE QUALITIES. RECOMMENDED INSTALLATIONS ARE WHERE THE PANELS WILL BE PROTECTED FROM HEAVY ABUSE AND HIGH IMPACT AREAS.

ADDED BENEFITS OF OUR REFLECT PANELS INCLUDE TACKABILITY AND THE EASE TO PERFORM FIELD MODIFICATION AND CUT-OUTS



EDGES:	REFLECT (SOFT), CHEMICALLY HARDENED OR ALUMINUM/ METAL
EDGE PROFILE:	SQUARE, BEVELED, BULLNOSED, OR CHAMFERED
CORNERS:	SQUARE OR RADIUSUED
MOUNTING:	IMPALIT CLIPS, Z-CLIPS, SPLINE, ADHESIVE*, HOOK & LOOP*, ROTOFAST (* REQUIRES LEVELING BRACKETS UNLESS PANELS CONTINUE TO THE FLOOR OR SUCH)
FACING MATERIALS:	100% WOVEN POLYESTER AND MOST OTHER PANEL FABRICS (CONTACT YOUR LOCAL REP OR FACTORY CONSULTANT FOR AVAILABILITY & SUITABILITY)
SIZES:	STANDARD - UP TO 48" x 120" (CUSTOM OVERSIZED PANELS ARE ALSO AVAILBLE)
STANDARD TOLERANCES:	(+) (-) 1/16" ON LENGTH, WIDTH & THICKNESS.
THICKNESS:	3/4", 1", 1-1/2", 2" (CUSTOM THICKNESS ALSO AVAILBLE)

DESCRIPTION	125HZ	250HZ	500HZ	1000HZ	2000HZ	4000HZ	NRC
3/4" FIBERGLASS WITH FABRIC	.10	.19	.57	.97	1.10	1.02	.70
1" FIBERGLASS WITH FABRIC	.05	.33	.90	1.05	1.09	1.03	.85
1-1/2" FIBERGLASS WITH FABRIC	.24	.71	1.10	1.15	1.13	1.08	1.05
2" FIBERGLASS WITH FABRIC	.33	.71	1.23	1.29	1.22	1.24	1.10

ALL NOISE REDUCTION COEFFICIENT (NRC) TESTS AS PER ASTM C-423 (TYPE A MOUNTING)
 ALL REFLECT PANEL COMPONENTS MEET CLASS A FLAME SPREAD AS TESTED UNDER ASTM E84
 CONTACT SOUND CONCEPTS FOR SOUND ABSORPTION AVERAGE (SAA) VALUES

SOUND CONCEPTS